

REMA 116 push trolley

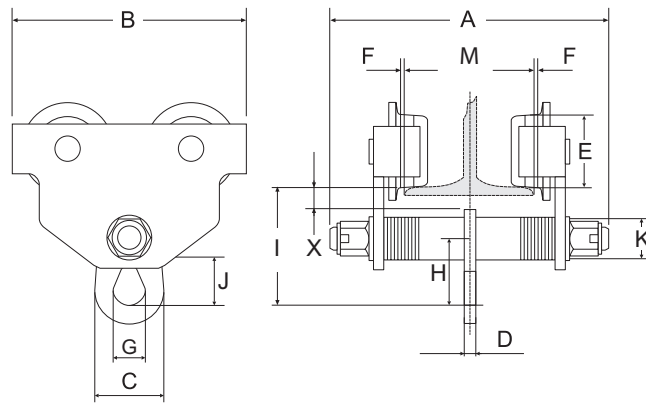


Properties

- Adjustable flange width by moving the adjusting rings.
- Suitable for various I-beams and H-beams.
- Equipped with solid steel machined wheels.
- Maintenance-free bearings.
- Tilting and anti-drop protection provides extra safety.

Norm:

- EN12100-1/2, EN13157



Type	WLL (kg)	Flange width (mm)	Min. radius (mm)	Weight (kg)	ProductId
116-0.5	500	50 - 152	800	6.5	0921001
116-1.0	1000	64 - 203	1000	10.5	0921003
116-2.0	2000	88 - 203	1100	17.5	0921005
116-3.0	3000	100 - 203	1300	27.0	0921007
116-5.0	5000	114 - 203	1400	41.0	0921009

Type	A (mm)	B (mm)	C (mm)	D (mm)	E (mm)	F (mm)	G (mm)	H (mm)	I (mm)	J (mm)	X (mm)
116-0.5	245	199	51	6	55	1.5 - 3	24	37	105	25	25
116-1.0	311	246	62.5	8	68	1.5 - 3	30	46	125	31	31
116-2.0	327	276	76	12	80	1.5 - 3	36	58	150	40	40
116-3.0	343	332	86	13.6	100	1.5 - 3	42	90	171	69	69
116-5.0	355	377	109	16.4	110	1.5 - 3	48	110	196	86	86